

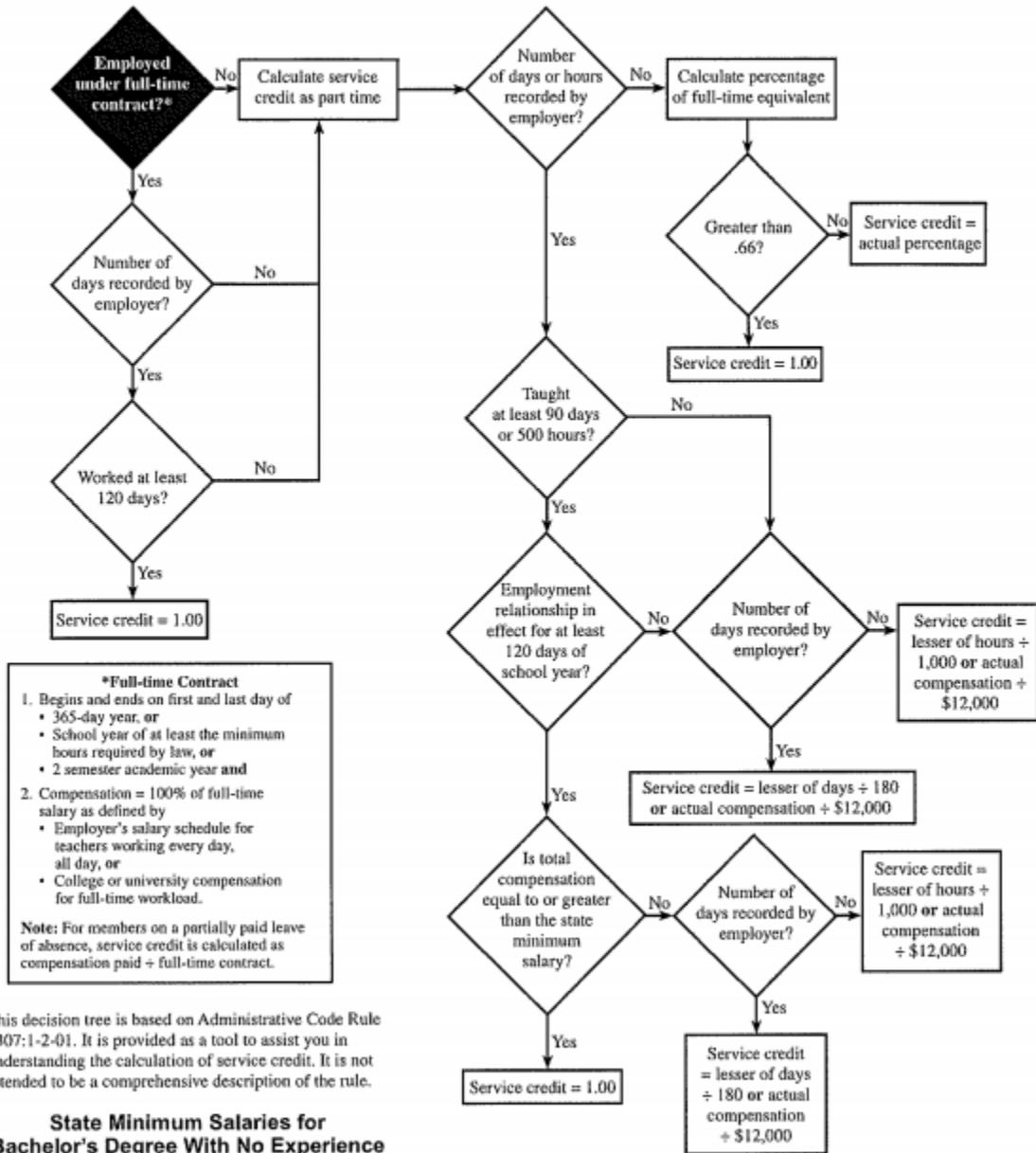
# STRS Decision Tree - Effective July 1, 2019



STATE TEACHERS  
RETIREMENT SYSTEM  
OF OHIO

275 East Broad Street  
Columbus, OH 43215-3771  
888-535-4050  
www.strsoh.org/employer

## Service Credit Decision Tree (Effective July 1, 2019)



**\*Full-time Contract**

- Begins and ends on first and last day of
  - 365-day year, or
  - School year of at least the minimum hours required by law, or
  - 2 semester academic year and
- Compensation = 100% of full-time salary as defined by
  - Employer's salary schedule for teachers working every day, all day, or
  - College or university compensation for full-time workload.

**Note:** For members on a partially paid leave of absence, service credit is calculated as compensation paid ÷ full-time contract.

This decision tree is based on Administrative Code Rule 3307:1-2-01. It is provided as a tool to assist you in understanding the calculation of service credit. It is not intended to be a comprehensive description of the rule.

### State Minimum Salaries for Bachelor's Degree With No Experience

Fiscal Year	Salary
2019-2020	\$20,000

(continued)

## Full-Time vs. Part-Time Service

	Full Time	Part Time
<b>Contract Length</b>	Covers the entire school year.	Covers only a portion of the school year.
<b>Compensation</b>	100% of the full-time salary defined by salary schedule  <b>and</b>  works at least 120 days.	Does not equal the salary schedule for teacher working every day of the school year  <b>or</b>  does not meet requirements for full-time employment.

## Calculating Part-Time Service Credit (Effective July 1, 2019)

Employment Status	Days Worked	Days in Employment Relationship	Is Salary Greater Than State Minimum?	Service Credit Calculation
<b>Part Time</b>	≥ 90	≥120	Yes	1.00
	≥ 90	≥120	No	Lesser of: Days ÷ 180 <b>or</b> Actual Compensation ÷ \$12,000
	≥ 90	<120	N/A	Lesser of: Days ÷ 180 <b>or</b> Actual Compensation ÷ \$12,000
	<90	N/A	N/A	Lesser of: Days ÷ 180 <b>or</b> Actual Compensation ÷ \$12,000