

User Agent Installation Instructions - Longhorn

- [Requirements](#)
- [Downloading the script](#)
- [Configuring Group Policy Object - Computer Startup](#)
- [Configuring Group Policy Object - User Login](#)
- [Linking the Policy](#)

Requirements

.NET Framework – Your .NET Framework needs to be at version 4.5.2 or later. You can update your .NET Framework easily via [Ninite](#).

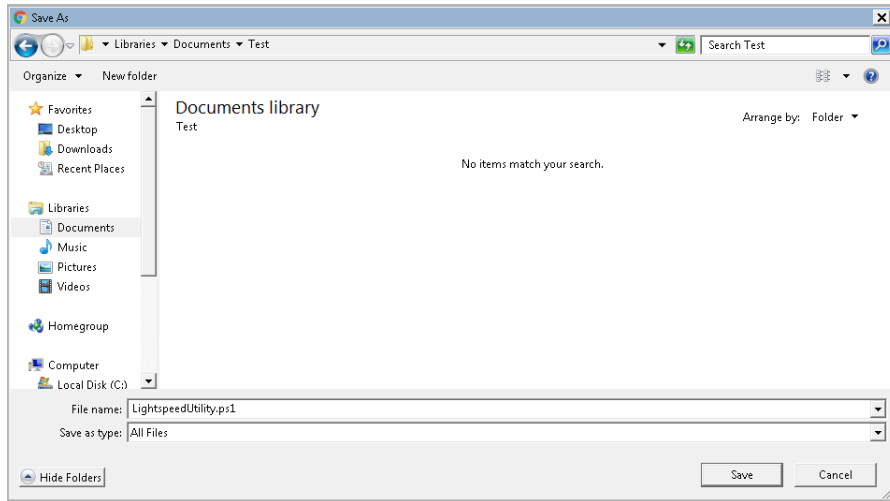
Downloading the script

The most recent copy is located here: <https://git.nwoca.org/redinger/public/raw/master/LightspeedUtility.ps1>

Save the page as



Make sure the file extension ends in .ps1 and the "Save As Type" is "All Files"

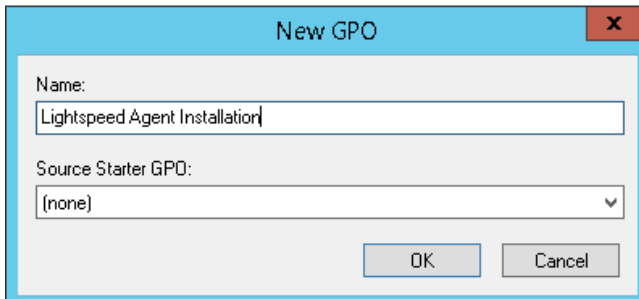


Copy the file to your domain controller and then copy the file to the server's clipboard

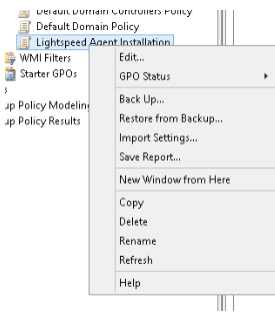
Configuring Group Policy Object - Computer Startup

Open Group Policy Manager on a domain controller

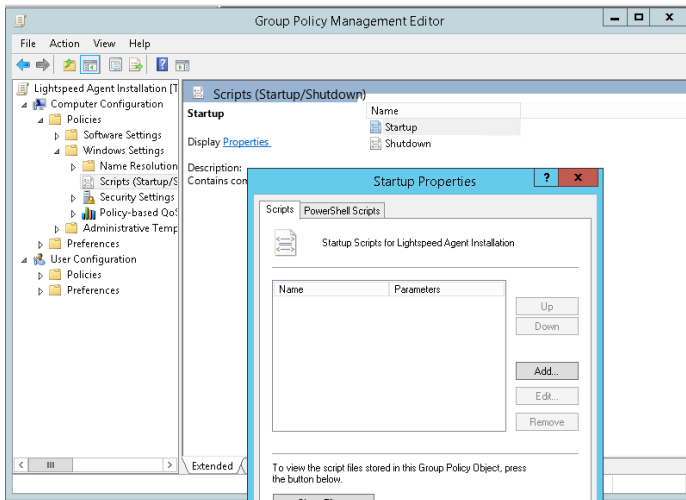
Create a new group policy



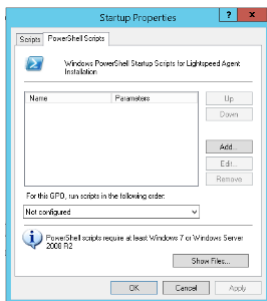
Edit Policy



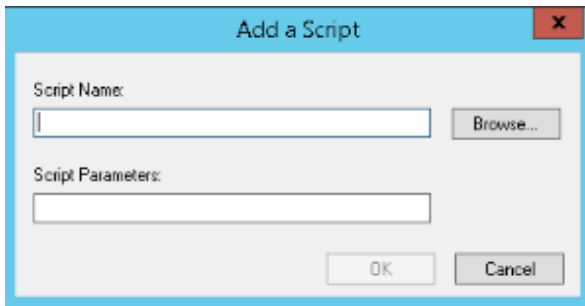
Go to Computer Configuration Policies Windows Settings Scripts Startup



Click the Powershell Scripts tab

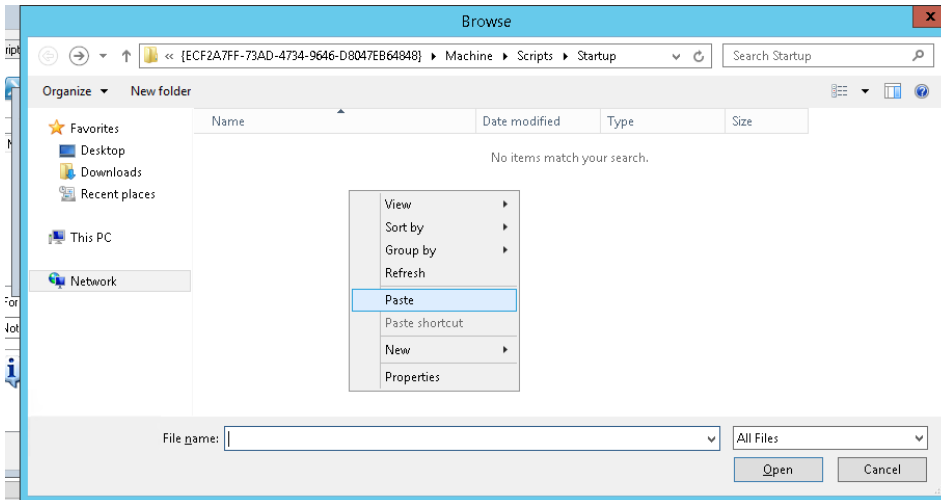


Click Add

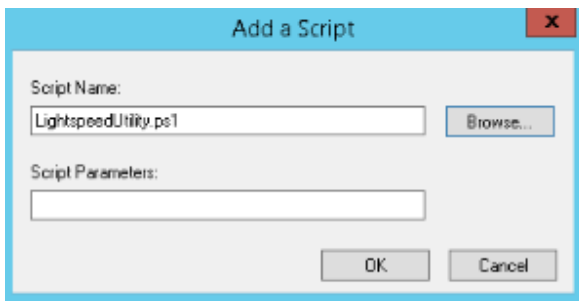


Click Browse...

Paste the Lightspeedutility.ps1 script into the explorer window

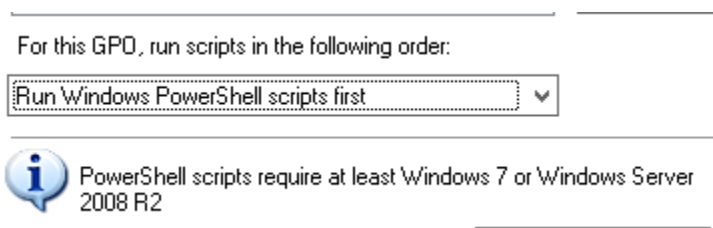


Select LightspeedUtility.ps1



Click Ok

Select the dropdown to "Run Windows PowerShell scripts first"

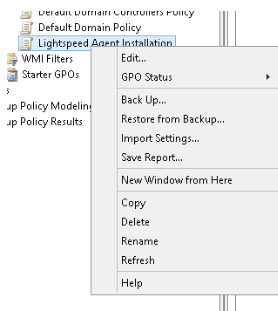


Click Ok

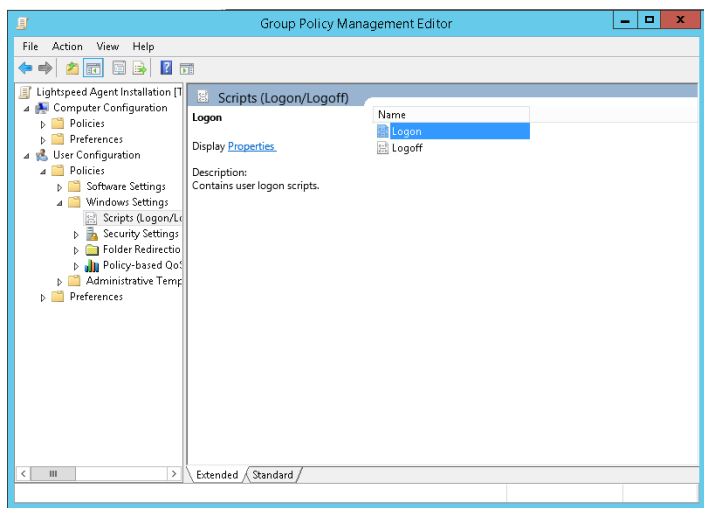
Close the Group Policy Management Editor Window and go to the Group Policy Management Window

Configuring Group Policy Object - User Login

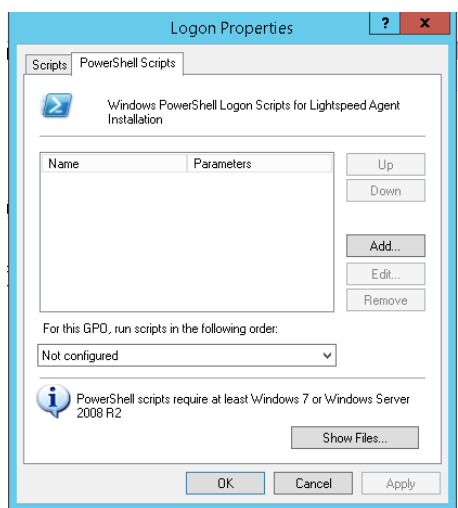
Edit Policy (it is safe to use the same policy created in the steps above)



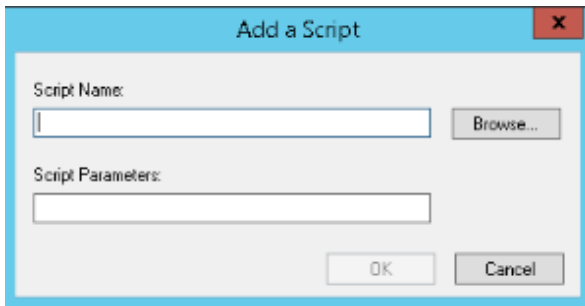
Go to User Configuration Policies Windows Settings Scripts (Logon/Logoff)



Click the Powershell Scripts tab

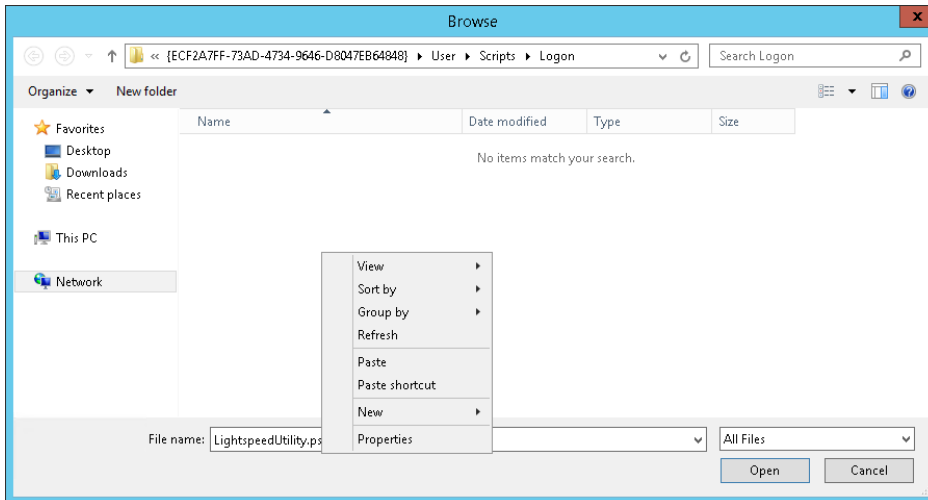


Click Add

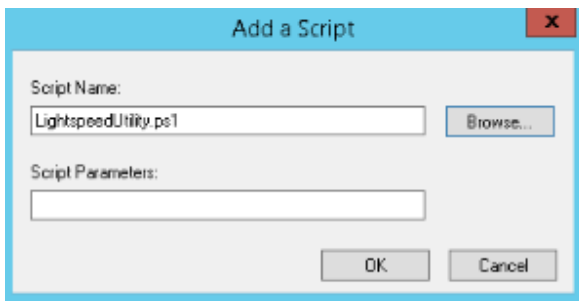


Click Browse...

Paste the Lightspeedutility.ps1 script into the explorer window

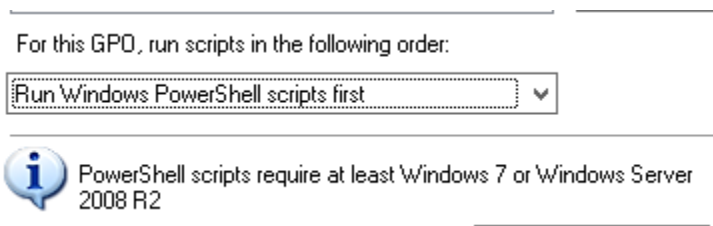


Select LightspeedUtility.ps1



Click Ok

Select the dropdown to "Run Windows PowerShell scripts first"



Click Ok

Close the Group Policy Management Editor Window and go to the Group Policy Management Window

Linking the Policy

Link the policy to the OU that contains the computer accounts that need to have the newest version of the Lightspeed Agent by right clicking on the OU and selecting "Link an Existing GPO..."

