

CRDC Report (2020-2021) Setup:

Setup
District
System

District under Setup

District Information

Batch School Setup	Setup and push school settings to multiple schools in a calendar, reporting terms, and quick lookup.
District Info	Define names and general information for the district.

District Info under District Information:

Scroll down to the blue hyperlink - Civil Rights Data Collection (CRDC)

OHIO STATE REPORTING INFORMATION	
Building IRN Default	School Number ▾
EMIS Student ID Prefix	E17
Staff Course (CU, PreID) Employee ID Field	Teacher Credential ID ▾

[Civil Rights Data Collection \(CRDC\)](#) For sub-district setups please use the CRDC link on the *District Setup > List Sub-Districts > Edit Sub-District* page

Nine Elements to be filled out on this page for the district info as appropriate for your district:

CRDC LEA ID can be found at <https://nces.ed.gov/ccd/districtsearch/>

nces.ed.gov/ccd/districtsearch/

APPS NewEmployee Acce... SIFWorks Data Coll... GVHS-Powerschool SSID Login Ohio Comp

NCES National Center for Education Statistics

Search for Public School Districts CCD Common Core of Data

School & District Navigator Public School Search Data Notes/Grant IDs Help

District Information

District Name: westerville NCES District ID:

Street Address: City: [Browse](#)

State: Zip Code: ~ Miles from Zip

County: Phone #: -

Additional Characteristics

District Types:

regular component supervisory union regional

state federal charter other

Number of Students: or more ▾ Number of Schools: or more ▾

SEARCH TIP: If you are having difficulty finding your school, try only entering the city, state, and/or a key word in the name.

SEARCH TIP: Use the additional characteristics fields in conjunction with any of the District Information.

Additional Characteristics should not be used if you have already entered the name of a school district.

Source: CCD public school district data for the 2019-2020, 2020-2021 school years

Search Results (records: 1)

District Name

1. [Westerville City](#)
936 Eastwind Dr Ste 200, Westerville, OH 43081

District Directory Information [Search Results](#) [Modify Search](#) [Data Notes/Grant IDs](#) [Help](#)

(2020-2021 school year)

District Name: Westerville City schools for this district	NCES District ID: 3904504	State District ID: OH-045047
--	-------------------------------------	--

Editing data for the 2021 school year

[Edit History Record](#)

CRDC LEA ID

LEA ID

Note: Enter the LEA ID provided to your district's CRDC Principal Contact Person (PCP). In most cases, it is the 7-digit unique identification number assigned to each LEA by ED's National Center for Education Statistics (NCES).

LEA Questions

Preschool

SSPR-4. Does the LEA provide preschool services or programs that serve children ages 3 through 5?

CRCO-1, CRCO-2. Civil Rights Coordinator

Does the LEA have a Civil Rights Coordinator to coordinate efforts to comply with and carry out the responsibilities under federal law prohibiting discrimination against students and others on the *basis of sex/gender (Title IX)*?

Name (Last, First):

Phone:

Email:

Does the LEA have a Civil Rights Coordinator to coordinate efforts to comply with and carry out the responsibilities under federal law prohibiting discrimination against students and others on the *basis of race/color/national origin (Title VI)*?

Name (Last, First):

Phone:

Email:

Does the LEA have a Civil Rights Coordinator to coordinate efforts to comply with and carry out the responsibilities under federal law prohibiting discrimination against students and others on the *basis of disability (Section 504 and/or Title II)*?

Name (Last, First):

Phone:

Email:

CRCO-3. Is this LEA covered by a desegregation order or plan?

Harassment and Bullying Policy

HIBD-1. Does the LEA have a written policy or policies prohibiting discriminatory harassment or bullying of students on the basis of sex, race/color/national origin, and disability?

HIBD-2. Enter the web link to the LEA's written policy:

DSED-1. Does the LEA have any students enrolled in any distance educational courses?

HSEE-1. Did this LEA operate a High School Equivalency Exam preparation program for students aged 16-19?

District Information

Batch School Setup	Setup and push school settings, calendar, reporting terms, and
District Info	Define names and general information
Districts of Residence	Define incoming student districts
Miscellaneous	Define miscellaneous settings
Parent Portal Settings	Set which icons appear on the parent portal
Schools/School Info	Create and define schools.

In District Setup – Under District Information - Schools/School Info:

State
Ohio

Select the blue “Ohio” hyperlink in the State column

Ohio State Information

Building IRN Default
ACT Testing Information
ACT Organization Code
Civil Rights Data Collection (CRDC)

Then the blue hyperlink “Civil Rights Data Collection (CRDC)”

SCH ID can be found by clicking the blue hyperlink “schools for this district” in the NCES website above:

District Directory Information (2020-2021 school year)		
Search Results	Modify Search	Data Notes/Grant IDs
Help		
District Name: Westerville City schools for this district	NCES District ID: 3904504	State District ID: OH-045047

Search Results (records: 22)	
School Name	
16.	Robert Frost Elementary School 270 North Spring Rd, Westerville, OH 43081
17.	Walnut Springs Middle School 888 E Walnut St, Westerville, OH 43081
18.	Westerville Central High School 7118 Mount Royal Ave, Westerville, OH 43082
19.	Westerville-North High School 950 County Line Rd, Westerville, OH 43081
20.	Westerville-South High School 303 S Otterbein Ave, Westerville, OH 43081
21.	Whittier Elementary School 130 E Walnut St, Westerville, OH 43081
22.	Wilder Elementary School 6375 Goldfinch Dr, Westerville, OH 43081


Page 2 of 2

Select the appropriate building:

School Name: Westerville Central High School	NCES School ID: 390450404566
---	---------------------------------

The SCH ID is the five digits (04566 for this example):

Several data elements to enter for that specific building:

 Editing data for the 2021 school year.

[Edit History Record](#)

LEA Questions

SSPR-2. Is this school a Non-LEA facility?

School Questions

DIND: COVID-related Directional Indicators

DIND-1. Directional Indicator – Instruction Type.

DIND-2. Directional Indicator – Virtual Instruction.

Grade Levels

SCHR-1. Grades Offered (Lowest to Highest)

SCHR-2. Does this school have ungraded students?

Indicate whether the ungraded school has mainly elementary, middle, and/or high school students.

SCHR-3. School Characteristics

Is this school a special education school?

Is this school either a magnet school or a school operating a magnet program within the school?

SCHR-4. Does the entire school population participate in the magnet school program?

Is this school a charter school?

Is this school an alternative school?

SCHR-5. This alternative school is designed to meet the needs of the following. (Check all that apply)

Students with Academic Difficulties

Students with Discipline Problems

COUR-4a/b. Students Who Passed Algebra I

Note: Specify which store codes for the school term should be considered as the final grade for a class.

[Final Grade Store Codes](#)

APIB-5. Is enrollment via self-selection by students permitted for all AP courses offered by the school?

Save the blue hyperlink “Final Grade Store Codes” for after you have submitted this page.

STAF: School & School Support Staff

Note: Values should be entered as decimal numbers to the hundredths place (i.e., two decimal places; e.g., 4.00, 4.75).

STAF-1. Teachers – FTE Count and Certification

Total number of full-time equivalent (FTE) teachers

Number of FTE teachers who are certified

Number of FTE teachers who are not certified

STAF-2. School Counselors Number FTE

Number of FTE school counselors

STAF-3. Support Services Staff Number FTE

Number of FTE nurses

Number of FTE psychologists

Number of FTE social workers

SECR: School Security Staff

Note: Values should be entered as decimal numbers to the hundredths place (i.e., two decimal places; e.g., 4.00, 4.75).

SECR-1. Security Staff Number FTE

Number of FTE sworn law enforcement officers

Number of FTE security guards

Interscholastic Athletics - Sports, Teams, and Participants

ATHL-1. Does this school have any students who participate in single-sex interscholastic athletics?

ATHL-2. Sports, Teams, and Participant Counts

Notes:

- Count only sports, teams, and participants on teams in which only male or only female students participate.
- The count of sports includes only distinct sports such as football, basketball, and soccer.
- The count of teams includes each competitive-level team in each sport, such as freshman team, junior varsity team, and varsity team in each sport.

What is the count of male only sports?

What is the count of female only sports?

What is the count of male only teams?

What is the count of female only teams?

What is the count of male only participants on teams?

What is the count of female only participants on teams?

OFFN: Offenses

OFFN-5. Number of Incidents Committed by School Staff

Enter the number of documented incidents of offenses committed by a school staff member that occurred at school

Rape or attempted rape

Sexual assault (other than rape)

OFFN-6. Allegations Against School Staff (Resignation or Retirement)

Enter the number of allegations against a school staff member of offenses that occurred at school

Rape or attempted rape

Sexual assault (other than rape)

OFFN-7. Allegations Against School Staff (Determined Responsible)

Enter the number of allegations against a school staff member of offenses that occurred at school

Rape or attempted rape

Sexual assault (other than rape)

OFFN-8. Allegations Against School Staff (Determined Not Responsible)

Enter the number of allegations against a school staff member of offenses that occurred at school

Rape or attempted rape

Sexual assault (other than rape)

OFFN-9. Allegations Against School Staff (Determination Pending)

Enter the number of allegations against a school staff member of offenses that occurred at school

Rape or attempted rape

Sexual assault (other than rape)

OFFN-10. Allegations Against School Staff (Duty Reassignment)

Enter the number of allegations against a school staff member of offenses that occurred at school

Rape or attempted rape

Sexual assault (other than rape)

Justice Facility

JUST-1. If this school is a justice facility, indicate the type that best describes the facility.

JUST-2. Enter the number of days that make up the justice facility's regular school year

JUST-3. Indicate the hours per week that the educational program is offered during the regular school year

INET-1. Internet Access and Devices

Is this school connected to the internet through a fiber-optic connection?

Does this school have Wi-Fi access in every classroom?

Does this school allow students to take home school-issued devices that can be used to access the internet for student learning?

Does this school allow students to bring to school student-owned devices that can be used to access the internet for classroom or student learning?

INET-2. Wi-Fi Enabled Devices

Enter the number of Wi-Fi enabled devices provided by the school to students for student learning use.

Submit

Scroll down to submit:

In District Office – 20-21 Year:

District Office ▾ 20-21 Year ▾

COUR-4a/b. Students Who Passed Algebra I

Note: Specify which store codes

[Final Grade Store Codes](#)

Once submitted – now back to the blue Hyperlink for “Final Grade Store Codes”

Enter appropriate store codes: Specify which store codes for the school term should be considered as the final grade for a class. Tip: If you are not sure, you can check Historical Grades for 20-21. These can be different by building, in this example they are S1, S2 & Y1

New Final Grade Store Codes

Term	2020-2021 ▾
School Name	Westerville North High School
Store Codes List (separated by a comma and without spaces)	S1,S2,Y1
Submit	

For Ohio State Truancy and Absente

Exclude from Instructional Time
attendance calculations

[Civil Rights Data Collection \(CRDC\)](#)

Courses/Sections can have CRDC data as well:

Only two questions and they may not apply to your situation:

[Start Page](#) > [School Setup](#) > [MA301 ALGEBRA 1](#) > [44](#) > [Civil Rights Data Collection](#)

[Westerville North High School](#) ▾ [20-21 Year](#) ▾

Civil Rights Data Collection

ALGEBRA 1 MA301 44

Block Scheduled Class

Note: Indicates a full-year course taken in one semester.

School Questions

COUR-13. Is this restricted to a single gender?

Not Restricted (Co-ed) ▾

Deprecated Fields

PENR-6. Is this a credit recovery section?

▾

[Submit](#)

In District Office – 20-21 Year:

Additional info – if courses are not pulling as expected - Course subject codes:

Algebra I – 110301

Geometry – 111200

Algebra II – 110302

Advanced Math – 110099, 111600, 111500, 119550, 320050

Calculus – 110600, 119930, 119960, 320150

Biology – 132230, 132330, 321350

Chemistry 130301, 132326, 321400

Physics 130302, 132325, 321450, 139940, 139950, 139960, 139970

Computer Science – 290050, 290100, 290110, 290120, 290130, 290075, 290140, 290150, 290200, 290250, 290310, 290320, 290325, 290160, 290165, 290170, 290180, 299999, 321600

Single Sex – Other Math–11xxxx except 110301, 111200, 110302 - Science–13xxxx

AP Curriculum=AP and Math 11xxxx - Science 13xxxx - Computer Science 29xxxx - Other AP any subject code other than 11xxxx, 13xxxx, 29xxxx

Each student has a CRDC tab (Edit History Record) – again may not be applicable for your school or the student:


Ohio State Information - Civil Rights Data Collection

ABC, MNO E GR: 12 SN: 309671 SCHOOL: WNHS COHORT YR: 2022 LANGUAGE: ENG

HR: MOSSING, H

Home GI FD FN FS FA FB FE Gifted Pre-ID SSID CRDC Contacts Obsolete

Civil Rights Data Collection

 Editing data for the 2021 school year.

[Edit History Record](#)

Exclude from CRDC

(N) No ▾

LEA Questions

Is the student educated outside of the district? (CRDC only)

(N) No ▾

HSEE-2. Does this student participate in a High School Equivalency Exam preparation program (for ages 16-19) operated by this LEA?

▾

Did this student receive the High School Equivalency Exam preparation program credential?

▾

School Questions

SCHR-2. If this student was considered ungraded, specify the student's ungraded age group.

▾

HIBS-1a. Student reported to have been harassed or bullied

on the basis of sex?

(N) No ▾

on the basis of race, color or national origin?

(N) No ▾

on the basis of disability?

(N) No ▾

Each Log Entry can contain CRDC data as well:

For CRDC Only	
SCH 19 & 21. Expelled with educational services	Not Applicable ▾
SCH 19 & 21. Expelled under zero-tolerance policy	Not Applicable ▾
SCH 19 & 21. Referral to law enforcement	Not Applicable ▾
SCH 19 & 21. School Related Arrest	Not Applicable ▾
SCH 31. Student disciplined for harassment or bullying	
on the basis of sex?	Not Applicable ▾
on the basis of race, color or national origin?	Not Applicable ▾
on the basis of disability?	Not Applicable ▾
SCH 32 - 33. Used Mechanical Restraints	Not Applicable ▾
SCH 32 - 33. Used Physical Restraints	Not Applicable ▾
SCH 32 - 33. Used Seclusion	Not Applicable ▾

System Reports – State tab – Civil Rights Data Collection (2020-2021):

Start Page > Reports > Reports (State Reports) > CRDC Report (2020-2021) District Office ▾ 21-22 Year ▾

CRDC Report (2020-2021)

Report Information

Description 2020-2021 Civil Rights Data Collection (CRDC) Report

The Civil Rights Data Collection (CRDC) is a mandatory data collection, authorized under the statutes and regulations implementing Title VI of the Civil Rights Act of 1964, Title IX of the Education Amendments of 1972, Section 504 of the Rehabilitation Act of 1973, and the Department of Education Organization Act (20 U.S.C. 3413). The regulations implementing these provisions can be found at 34 CFR 100.6(b); 34 CFR 106.71; and 34 CFR 104.61.

Report data based on October 1 (or the closest school day to October 1).

Version 1.0

Output File Name CRDC

Category Civil Rights Data Collection (2020-2021)

Published Date 12/13/2021 08:42 AM

Comments Flat Files now included with updated GED headers
Schools with the same CRDC School ID must be run together to correctly aggregate data.

Report Parameters (Check box on the right to save as default value) Clear All ▾

Schools to Include*

Select Multiple Schools Remove Excluded

- Alcott Elementary School
- Annehurst Elementary School
- Blendon Middle School
- Cherrington Elementary School
- Early Learning Center

All Schools

Fall Count Date* 10/1/2020 ▾

School Year* 2020-2021 ▾

Spring Count Date (Used for block schedule classes only) MM/DD/YYYY ▾

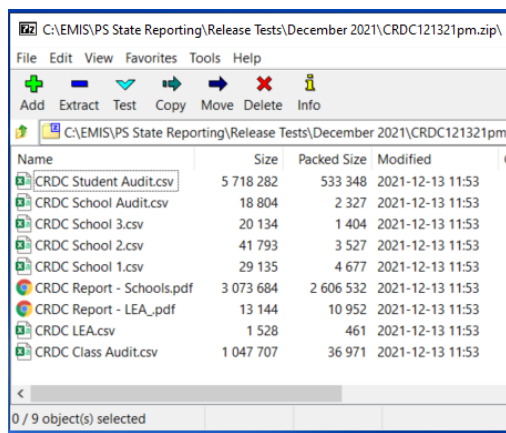
IDEA Count Date 10/31/2020 ▾

Output PDF Files Include ▾

Output Submission Files Include ▾

Output Audit Files Include ▾

Spring Count Date – “For schools with block scheduling that allows a full-year course to be taken in one semester, the count reported should be based on the sum of a count taken on October 1 (or the closest school day to October 1) in the first block, and around March 1 in the second block.”



Zip file is created:

In District Office – 20-21 Year:

Additional information can be found at www2.ed.gov/about/offices/list/ocr/data.html

2020-21 CRDC

On December 28, 2020, OCR received [OMB approval](#) to require all local educational agencies (LEA) in the country, including **every** public school district, charter schools, juvenile justice facilities, alternative schools, and schools serving only students with disabilities to respond to the CRDC for the 2020-21 school year. Changes were made to the CRDC, which had the net effect of reducing burden on school districts. The 2020-21 CRDC survey includes new questions that will collect key data in areas of increasing civil rights concerns such as incidents of rape, attempted rape, or sexual assault committed by school staff members and incidents of harassment and bullying based on perceived religion or shared ancestry. For more details about changes in the 2020-21 CRDC, go to Questions and Answers [PDF](#) (423.46K).

Survey Forms

The 2020-21 CRDC school- and LEA-level survey forms contain instructions, definitions, and table layouts for the 2020-21 CRDC items.

- 2020-21 CRDC School Form [PDF](#) (1.6M) **UPDATED!**
- 2020-21 CRDC LEA Form [PDF](#) (458.8K) **UPDATED!**

Data Elements

- Detailed List of 2020-21 CRDC Data Elements [PDF](#) (313.7K)

Questions and Answers

- 2020-21 CRDC Questions and Answers [PDF](#) (423.46K)

Guide

- [Forum Guide to Reporting Civil Rights Data](#) – This guide presents a variety of effective methods through which local educational agencies (LEAs) report civil rights data to OCR, and provides examples of how state educational agencies can voluntarily help their LEAs with Civil Rights Data Collection reporting.

To access additional technical assistance resources, please visit the CRDC Resource Center web site at <https://crdc.communities.ed.gov>.

Additional Resources - [CRDC Resource Center](#) website (crdc.communities.ed.gov). This website contains helpful documents such as:

- [The New User Starter Kit](#)
- The [School Form](#) (which contains all of the school level CRDC questions)
- The [LEA Form](#) (which contains all of the district level CRDC questions)
- Various [data tips](#) that assist users in submitting accurate and complete data
- Various [Training Videos](#)

LEAs must submit their data by the February 28, 2022, close date.

Next Meeting – January 18, 2022